

OFFICIAL BROCHURE

2018



CONTINUITY OF YOUR TXP/T2000

OFFICIAL BROCHURE 2018

Bohemia Market CZ, s. r. o.

**Replacing HMI system
won't add one single Megawatt
to your plant.**

So keep your current HMI running!



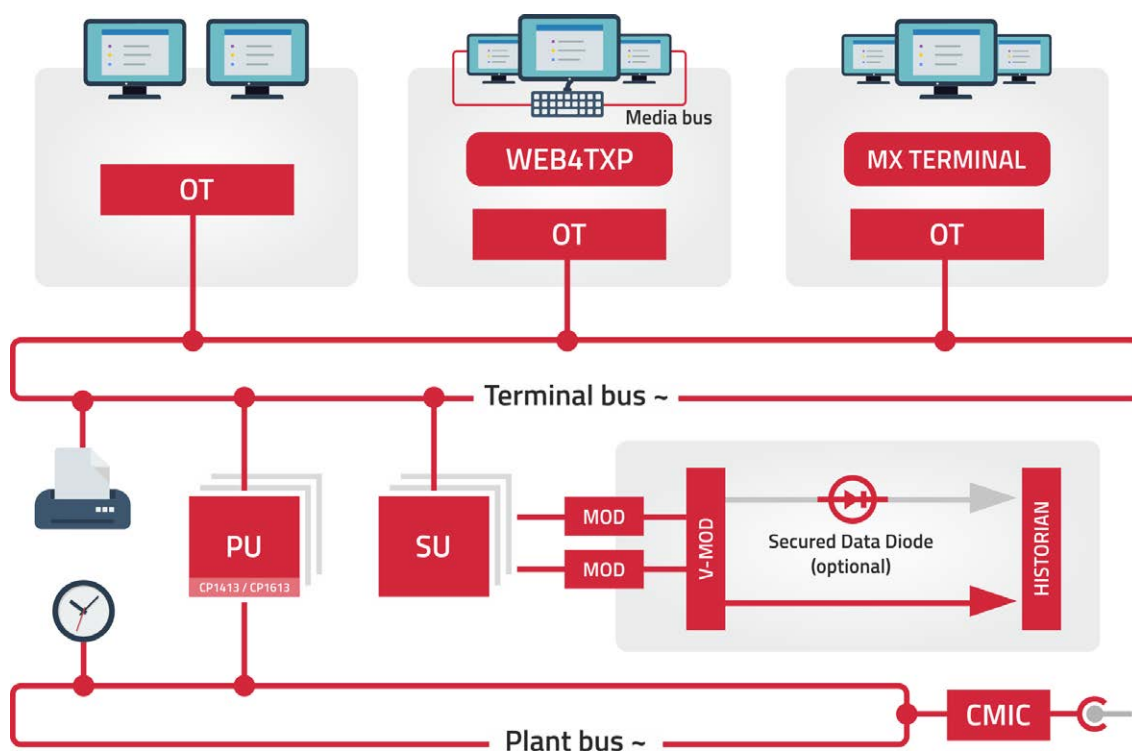
OMLEX

Continuity for your plant

OMLEX - OM650 Life Extension

OMLEX is a set of procedures and components which allows continuous maintenance and life extension of Siemens SPPA-T2000 HMI (OM650) on an as-needed basis.

OMLEX is a solution how to deal with obsolete parts of the otherwise outstanding OM650 system without a need for significant investment.



Main OMLEX advantages

OMLEX is resolving many issues such as dependency on obsolete SCSI technology, Magneto Optical disks by using modern hardware.

Modern Industrial Grade Hardware

- Delivery of fully assembled and tested server
- Server can accommodate PCI, ISA cards
- Computer on board allows right selection of the CPU, RAM
- 48 hours testing at climatic chamber



HISTORIAN

Turn data into information

Historian is a permanent solution for your long term plant data storage, management, reporting and analysis. It solves a problem with Magneto Optical Disks and stores data on modern VMOD server.

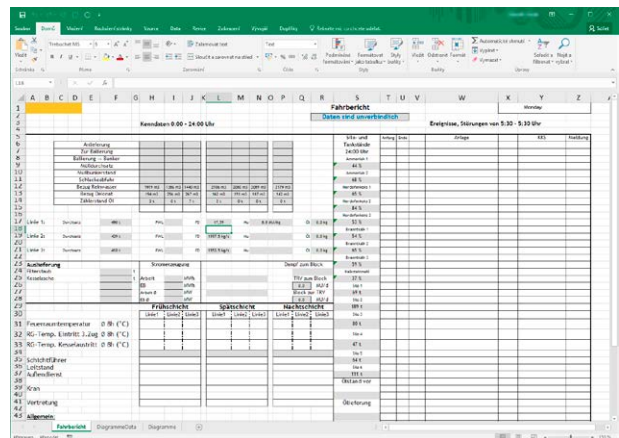
Charts

Powerful custom interactive charting components allows quick visualisation and exploration of all plant data. Multiple signals over ten years in a couple of seconds? No problem!



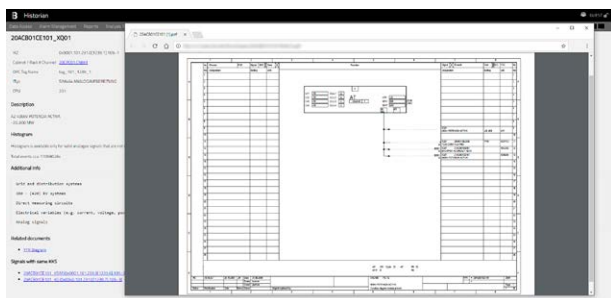
Reporting

Not only that you can export any RAW or interpolated data into CSV or Excel file, you may also provide your own Excel template and automatically produce scheduled reports every day!



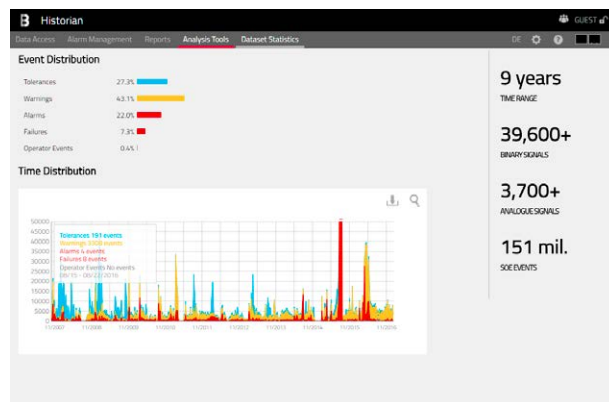
Documentation

Tired of diving deep into the ocean of blueprints just to identify what signal is this? With our Historian you may find the relevant signal documentation, explanation and procedures using just one click!



Data Analysis

It's apparent, that lowering the number of alarms increases the efficiency of operators and whole plant. But how to do that? Our analytical tools quickly finds the problematic spots and help you eliminate them. And this is just one example...



Root Cause Analysis

Ever wanted to find the cause of the problem within minutes? We've got a tool specially for this! Quickly scroll through the time to the problematic spot, filter out irrelevant signals, consult the documentation for preceding events and you're done.

SUPPORT

Continuity for your plant

Bohemia Market CZ and Industrial Control Care (ICC) are partnering together to offer complete support for operators and their TXP systems.

Providing more reliability and added functionality than ever, operators can now receive server hardware upgrades, support on existing automation hardware with available spares and repair servicing for ensured OPEX/CAPEX savings. With decades of TXP / T2000 experience, Bohemia Market and ICC are the one-stop solution that keeps systems running.

HMI/server hardware upgrades:

VMOD SERVER / HISTORIAN

- ✓ Access Data According to Your Needs and Filter Settings
- ✓ Convert Archived Data on to a Magneto Optical Disk (MOD) Connected to an
- ✓ Independent SQL Database with Full Back Revert
- ✓ Compatibility Data is Transferand Conversion Ready
- ✓ Optional OPC HDA Server

OMLEX SERVER

- ✓ 24/7 Call Center or Email Support
- ✓ Eliminate Dependency on Obsolete SCSI Technology and More
- ✓ No OM650 System Changes
- ✓ Run HMI Systems on Modern OMLEX (OM650 Life Extension) Hardware
- ✓ Standard 3-5 Year Warranty

Hardware support

TEST / REPAIR CENTER

The Bohemia Market and ICC collaboration offers an in-house test and repair center with various support services for users' current hardware:

- Test and Certification on Functionally Unknown Cards/Old Inventory
- Repair Faulty Boards Previously Removed from Service
- Preventative Hardware Maintenance INVENTORY Spares for the TXP system include:
 - Simatic S5 / S7
 - FUM Cards
 - SIMADYN

Knowledge Based Industrial Parts Sourcing

We support you to extend the lifetime of your existing plant. KB-IPS expands our successful OM Life Time Extension (OMLEX) concept to the I&C Field (Equipment and Component) level of your plant through sourcing of new, used and refurbished spare parts of even current substitutes of obsolete hardware. We can also help with related documentation and procedures as well as with qualified technicians. KB-IPS aims to be a one-stop solution provider for your life time extension needs!

We are working to extend our KB-IPS services into the E&M equipment and components of power plants!

Please register now at kb-ips.com to discover its full potential.

BM LIBRARY

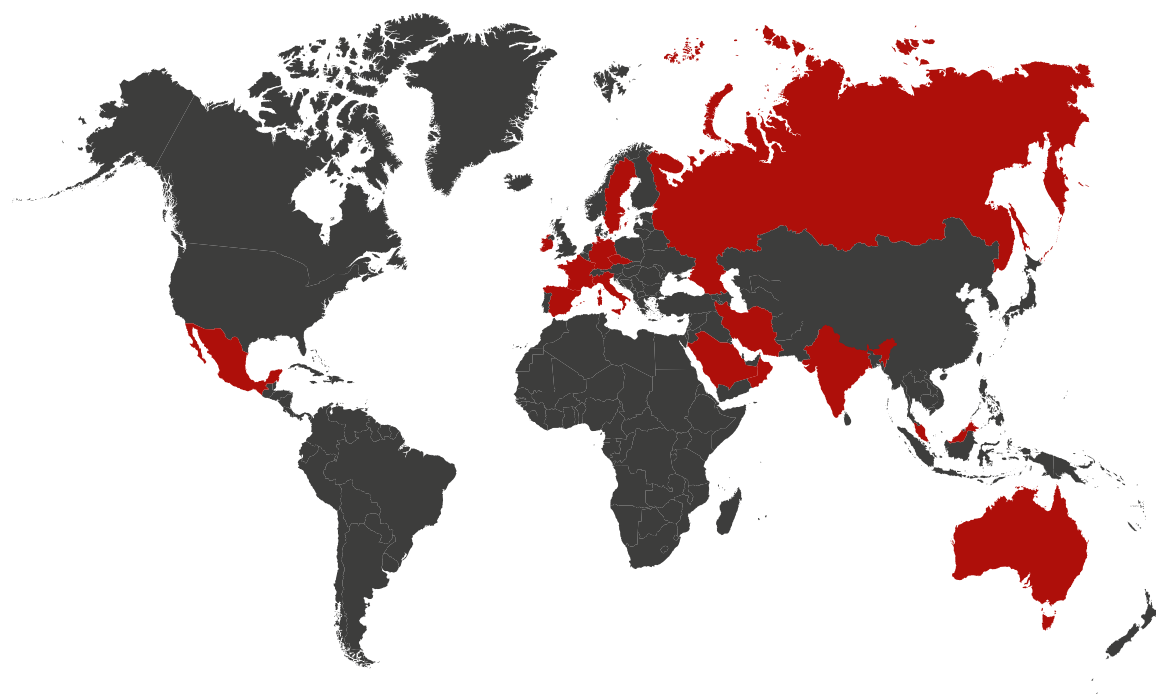
Continuity for your plant

TXP / T2000 Knowledge & Training

Through the years we gathered significant knowledge about TXP / T2000 system. Recently we made our knowledge base available to public while still offering training courses for your personnel.

References

Bohemia Market Company provides services all around the world to over 50 customers. Detailed references are made available to known partners during our presentations or through official correspondence. We are having customers in Spain, Czech, EEW Germany, Middle East (UAE, KSA, Bahrain, Oman), India, Iran, Malaysia. Our customers are Engie (previous GDF Suez), Saudi Electric SEC, DEWA Dubai, Torrent Power, YTL Malaysia, MAPNA Iran and a lot of independent operators.



Bohemia Market CZ, s. r. o.
Světlice 118, 396 01 Humpolec – Czech Republic
+420 565 533 729
sales@bohemiainmarket.com
bm.company

Don't spend millions

Keep your current system running!

For more than sixteen years, Bohemia Market CZ has supplied its customers with more than a just servers, racks, or parts and pieces. We are a business partner, a trusted service provider of comprehensive product lines and solutions, backed by solid guarantee, fast and friendly service, and incredible sourcing capabilities.

All product names, trademarks and registered trademarks and property of their respective owners.
All company, products and service names used in this document are for identification purposes only.
Use of these names, trademarks and brands does not imply endorsement.